



ASABE CHICAGO SECTION

Winter Meeting – February 3, 2010

WHAT: [International Harvester Research Farm at Hinsdale, IL](#) - A presentation by [James Martin](#) highlighting the history of the property now used by CNH America, LLC, for its Burr Ridge Headquarters and Engineering Center.

Demonstrations of CNH's Virtual Reality Room

WHEN: **Wednesday, February 3, 2010**
Virtual Reality Demos start at 4:00 PM

WHERE: CNH - Burr Ridge Headquarters
6900 Veterans Blvd.
Burr Ridge, IL 60527

TO REGISTER: Contact Dan Karlak at:
(630) 887-3083
dan.karlak@cnh.com

The registration deadline is January 27, 2010, at 3:00PM. This is the latest time that the CNH cafeteria can order food so we are not able to extend for any reason.

SCHEDULE:

4:00 – 5:30 Registration

4:00 / 4:30 / 5:00 Virtual Reality Center - *Demonstration of VRC capabilities which provides full-scale stereo visualization of CAD models and gives Engineers a chance to evaluate form, fit and function before any physical prototypes are built. Since seating is limited to 22 people per demonstration, please sign up for one of (3) 25 minutes sessions at 4:00, 4:30, or 5:00 p.m. when you register.*

4:00 - 5:30 CNH Heritage Display – *View historical equipment from International Harvester, Case, and Case IH.*

CNH Company Store – Store will be open to purchase CNH, Case IH, and New Holland merchandise including hats, clothing, model tractors, pens, etc. Checks Preferred. Cash only in exact amount. No Credit Cards.

Note: Arrive early to maximize viewing time of the equipment display and shopping in the store, as it will take a few minutes to check in with security.

5:30 Dinner

6:15 Presentation by Jim Martin

7:15 ASABE Chicago Section Meeting

COST: **\$15 Members / Non-Members / Guests**
(Includes Meal)

Guests Welcome!

MENU:

A buffet of the following will be offered:

- *Tossed Salad Italian Dressing*
- *Caesar Salad Caesar Dressing*
- *Bread & Butter*
- *Baked Veal Parmigiana*
- *Baked Mostaccioli*
- *Vegetables Medley*
- *Low Fat Cookies*
- *Assortment of Soda and Water Beverages*

Jim Martin



As the son of an IH employee who lived on the Hinsdale Research Farm on County Line Road from 1940 to 1954, Jim Martin had many interesting experiences seeing a lot of equipment and a little of how it was tested. As one of the kids who grew up there, Jim wants to share his memories with all who are interested in things IH.

“My memories are few of the engineering but I can give a pretty good explanation of the site. It was a really unique place to grow up.”

Jim will show pictures of the dairy farm that was operating prior to 1958 and talk about his childhood when he grew up on this farm in the forties.

Growing up on and in the vicinity of the IH Research Farm Martin went to Gower School and Hinsdale Township High School, now Hinsdale

Central. He then attended Lyons Township Junior College, now part of College of DuPage. In the Fall of 1959 Martin worked at the IH Broadview Parts Depot. Later Martin found a more permanent position with United Air Lines at O’Hare, where he worked from late 1959 into 1967 with a break in 1963-1965 for a stint in the U.S. Army. Returning to United, he went back to school and graduated from Northern Illinois Univ. in DeKalb in 1969 with a degree in Geography specializing in transportation.



Jimmy in the Fall of 1943, the building was the North shop where farm equipment was maintained.

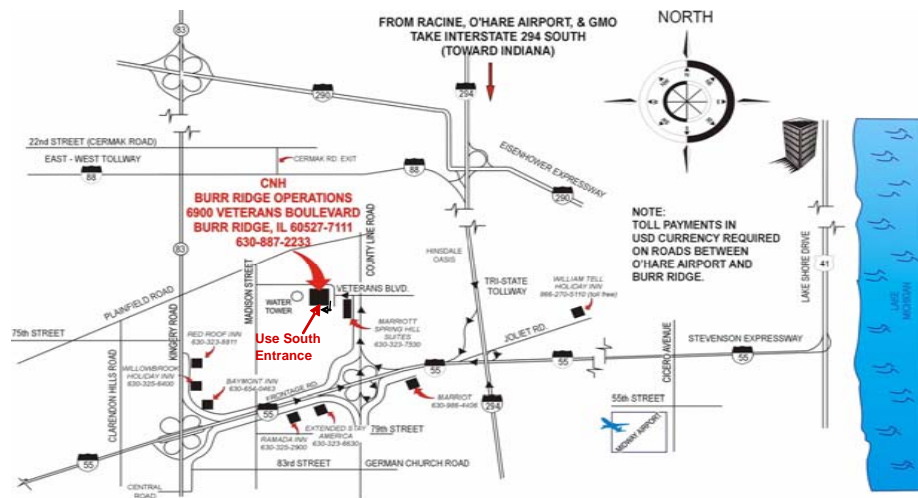
Martin moved to Wisconsin and worked for WisDOT in highway planning for 8 years then registered airplanes for the state for 10 years. The last 10 years of his career were spent working in aeronautics as the states tall tower specialist monitoring tall structures in Wisconsin. Following bypass surgery in 1997 he decided to retire early in early 1998.

Since then he has worked summers as a carpenter for the Experimental Aircraft Association at Oshkosh helping maintain the facilities used for the annual Fly-in/convention. During the convention he is co-chair of the workshops teaching how to start making your own

light airplane.

During the winters he talks about IH and Grandson, Jim Martin. Martin is currently working on a book of his experiences at the IH Experimental Farm in Hinsdale.

Directions and Map - The February meeting will be hosted at CNH Burr Ridge Headquarters, located 2 blocks west of County Line Road just north of I-55. County Line Rd. is the first I-55 exit west of the intersections of I-55 and I-294. Exit County Line Rd. North. Turn left at the first stop light on to Veterans Blvd. Turn left at the second stop sign (in front of the CNH Main Entrance) and go around to the south side of the building. Entry will be at the South Entrance/Security Office.



Attention Professional Engineers: This meeting will count for 1.0 PDH (Professional Development Hours.) A signed receipt from ASABE will be available for you when you pay your admission.

The Virtual Reality Center (VRC) has been in operation since May 23rd 2006 and is one of the top Virtual Reality Centers in the U.S. The VRC has added another dimension to the Digital Prototyping capabilities of CNH. VRC provides full-scale stereo visualization of CAD models and facilitates interaction similar to physical prototype, but free of any physical constraints. VRC gives Engineers a chance to evaluate form, fit and function before any physical prototypes are built. This is achieved by complex interaction between hardware, software and a series of sensors on the body.

