



**ASABE CHICAGO SECTION**  
**Summer / Annual Meeting - July 16, 2008**



**WHAT:** Helping Protect the World's Grain Supply  
*Presentation by Charles Sukup, President of Sukup Manufacturing Co. and Past President ASABE (2006-2007).*

**WHEN:** Wednesday July 16, 2008

**WHERE:** CNH - Burr Ridge Headquarters  
6900 Veterans Blvd.  
Burr Ridge, IL 60527

**TO REGISTER:** Contact Charles Ogborn at:  
(630) 577-2050  
[coqborn@packereng.com](mailto:coqborn@packereng.com)

**Please register by 3:00 pm, July 14, 2008!**

**SCHEDULE:**

- 5:30 Registration
- 6:00 Presentation by Charles Sukup  
*Helping Protect the World's Grain Supply*
- 7:00 Dinner
- 7:30 ASABE Chicago Section Meeting
- 2008 – 2009 Officer Elections
  - Member Service Recognition Awards

**COST:** \$15 Members / Non-Members / Guests  
\$10 Students  
*Guests Welcome!*

**MENU OPTIONS:**

*A buffet of the following menu options will be offered:*

*Italian Sandwich - Italian Sub/Beef Sandwich,  
Mostaccioli w/Marinara Sauce, Garden Salad*

*South of the Border- Ground Beef/Chicken Fajita Strips, Refried Beans, Mexican Rice, Flour Tortillas, Taco Shells, Cheese, Sour Cream, Lettuce, Tomatoes, Onions, Chips & Salsa.*

*Pasta Primavera - A Mix of Fresh Seasoned Vegetables in a Roasted Garlic Herb White Wine Sauce, House Salad*

**Special Note!**

DVD's of Harold Brock's Presentation at the April Meeting will be available for a Donation to the Harold Brock Endowment Fund at Hawkeye Community College.



Grains are not only critical to the world's food supplies, they are becoming increasingly of value to alternative energy fuel production. But grains deteriorate and spoil if they are not properly dried and stored. Few people are more knowledgeable about grain drying and storage best practices as used for food, livestock and biofuels than Charles Sukup. Sukup is president of Sukup Manufacturing Co., Sheffield, Iowa, and is primarily responsible for the company's engineering

and sales. Sukup Manufacturing is the world's largest family-owned manufacturer of grain handling, drying and storage equipment. The company's product line includes grain dryers, farm and commercial grain bins and grain handling equipment, as well as innovative tillage equipment. Since becoming president in 1995, Sukup has quintupled the size of the company, and has helped to expand its sales throughout the United States and in more than 50 foreign countries. The company's innovative designs have received 90 U.S. and foreign patents and market leadership in numerous grain handling and storage product categories.

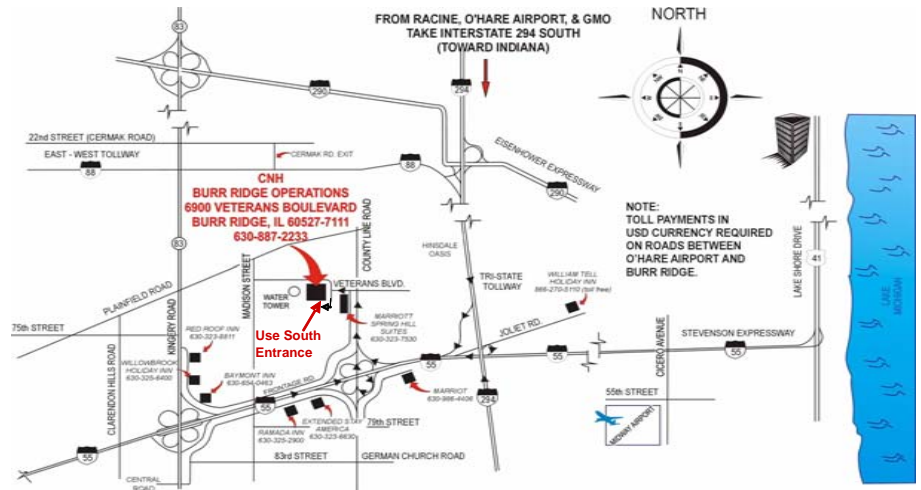
Mr. Sukup has B.S. and M.S. degrees in agricultural engineering from Iowa State University and currently serves on the Agricultural & Biosystems Engineering Advisory Committee at ISU. Sukup has seven U.S. patents for grain handling and tillage equipment. He has served in a number of national and state offices and executive and technical committees, including on



the ASABE Board of Trustees and Nominating Committee. Sukup is past president (2006-2007) of the American Society of Agricultural and Biological Engineers (ASABE). He has been a registered professional engineer since 1982.

Mr. Sukup presentation will include an overview of Sukup Manufacturing Co. and its products, the importance of storing and handling grain to provide quality food and fuel stock, and the importance of ASABE in its 100 year history to agriculture, agricultural products, and the agricultural engineering profession.

**Directions and Map** - The July meeting will be hosted at CNH Burr Ridge Headquarters, located 2 blocks west of County Line Road just north of I-55. County Line Rd. is the first I-55 exit west of the intersections of I-55 and I-294. Exit County Line Rd. North. Turn left at the first stop light on to Veterans Blvd. Turn left at the second stop sign (in front of the CNH Main Entrance) and go around to the south side of the building. Entry will be at the South Entrance/Security Office.



**Attention Professional Engineers:** This meeting will count for 1.0 PDH (Professional Development Hours.) A signed receipt from ASABE will be available for you when you pay your admission.